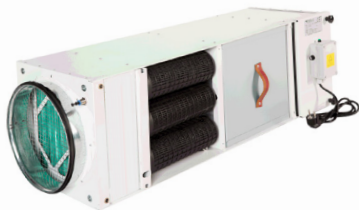


# CC 410 (Concealed)



### Advantages

- Healthier employees
- Less cleaning
- Lower energy costs
- Reduced environmental impact
- Clean products, fewer operational disruptions
- Easy to adapt ducts and diffusers
- Less odour

**Application:** Air purifier for rooms measuring up to 140 m<sup>2</sup>, for example small or medium offices.

**Type:** Air cleaner

**Product voltage (V):** 200...240V, **Frequency:** 50/60hz

**Duct Connection:** 2 pc Ø250mm

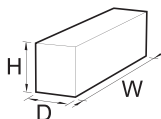
**Capacity:** 0~490 m<sup>3</sup>/h, Air Flow controlled by potentiometer with cable (5m)

**Air Image:** Optional

**Installation:** Wall or ceiling (built in)

**Design:** Powder coated sheet steel (White)

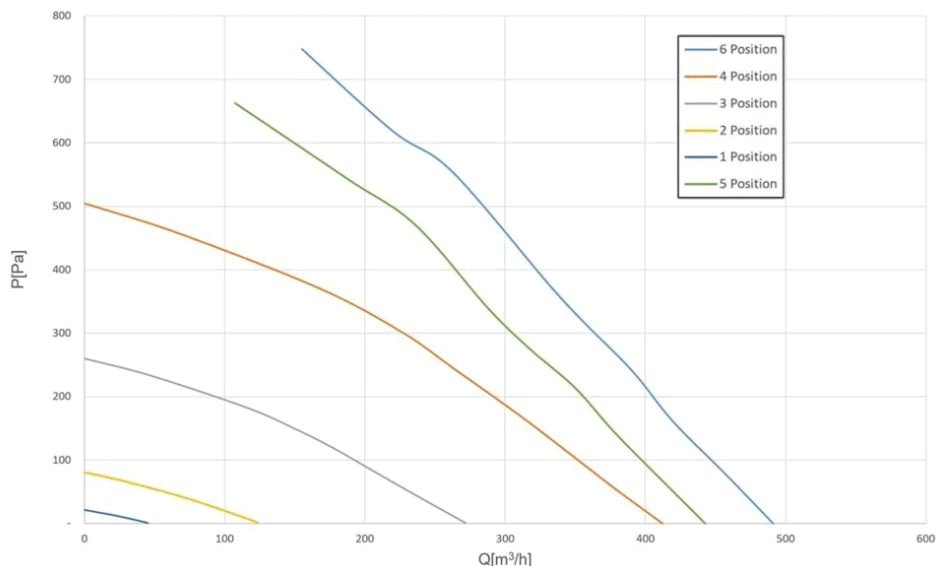
**Air purification area:** MAX 140m<sup>2</sup>



Article number	Type	Dimensions (WxHxD) (mm)	Weight	Air flow (m <sup>3</sup> /h)	Power output W (Max)	Filter included in standard version
94000159	Air Cleaner 410 (Concealed) - M	1052x300x364	31.5	480	165	ISO ePM10 50% + H13 (HEPA filter) *Molecular filter not included
94000160	Air Cleaner 410 (Concealed)	1052x300x364	25	490	165	ISO ePM1 60% (bag filter) + H13 (HEPA filter)
94000159A	Air Cleaner 410 (Concealed) - M	1052x300x364	31.5	480	165	ISO ePM10 50% + H13 (HEPA filter) *Molecular filter not included
94000160A	Air Cleaner 410 (Concealed)	1052x300x364	25	490	165	ISO ePM1 60% (bag filter) + H13 (HEPA filter)

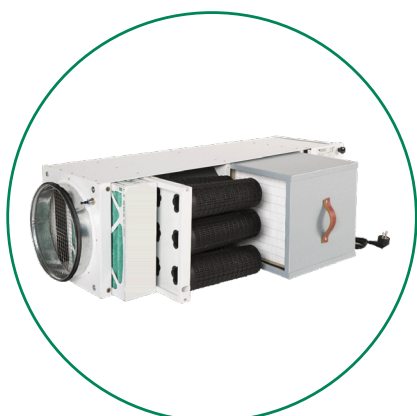
## Operating specifications

Setting	Air flow m <sup>3</sup> /h	Noise level dB	Power Consumption (W)	System efficiency based on H13
1	45	23.0	2.5	>99 %
2	124	28.1	8.3	>99 %
3	271	44.7	37.9	>99 %
4	412	55.3	101	>99 %
5	442	58.9	155	>99 %
6	490	63.3	165	>99 %



## CC 410 (Concealed)

Built-in air purifier for all types of indoor environments.



FOR SMELLS REMOVAL (VOC)



Air Cleaner CC 410  
(Concealed)

EXAMPLE OF A  
CC 410 (CONCEALED)  
BEHIND FALSE CEILING



### Upgrades / Accessories / Exchange

#### EXCHANGE - PRE-FILTER

- Art. no. 94020069 - HI-FLO 287x287x370-5-20, filter class ePM1 60%, 1 pc per unit, standard
- Art. no. 94000178 - Ecopleat 3GPPS-282x282x95, filter class ePM1 55%, 1 pc per unit, standard

#### EXCHANGE - HIGH EFFICIENCY

- Art. no. 94020022 - CET11-287x287x292-01, filter class E11, 1 pc per unit, standard
- Art. no. 94020024 - DE13-287x287x292-PR, filter class H13, 1 pc per unit
- Art. no. 94000104 - CET14-287x287x292-0P-WW, filter class H14, 1 pc per unit

#### EXCHANGE - MOLECULAR

- Art. no. 94020046 - CamCarb CG 600 VOC, 9 pc per unit
- Art. no. 94020049 - CamCarb CG 600 formaldehyde, 9 pc per unit
- Art. no. 94020052 - CamCarb CG 600 decontamination, 9 pc per unit